

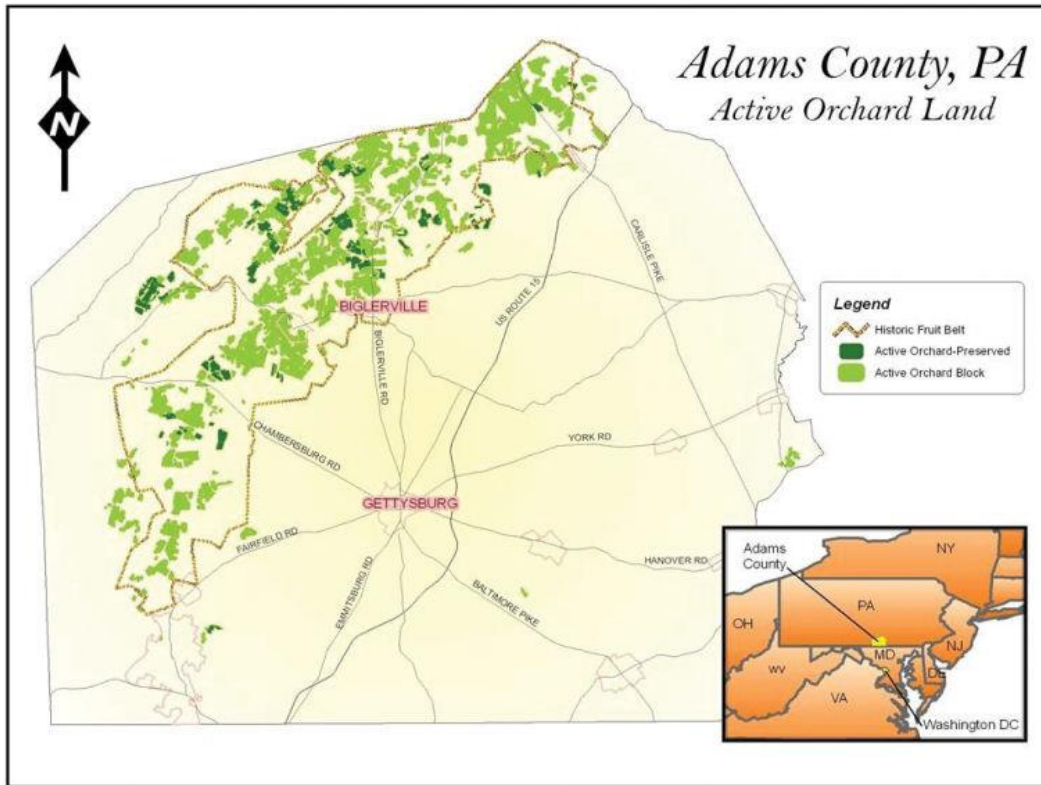
Problem Statement: Farm Labor Oral History

Partnership Contact: Joe Baker, southmountainscience@gmail.com (717) 422-7138

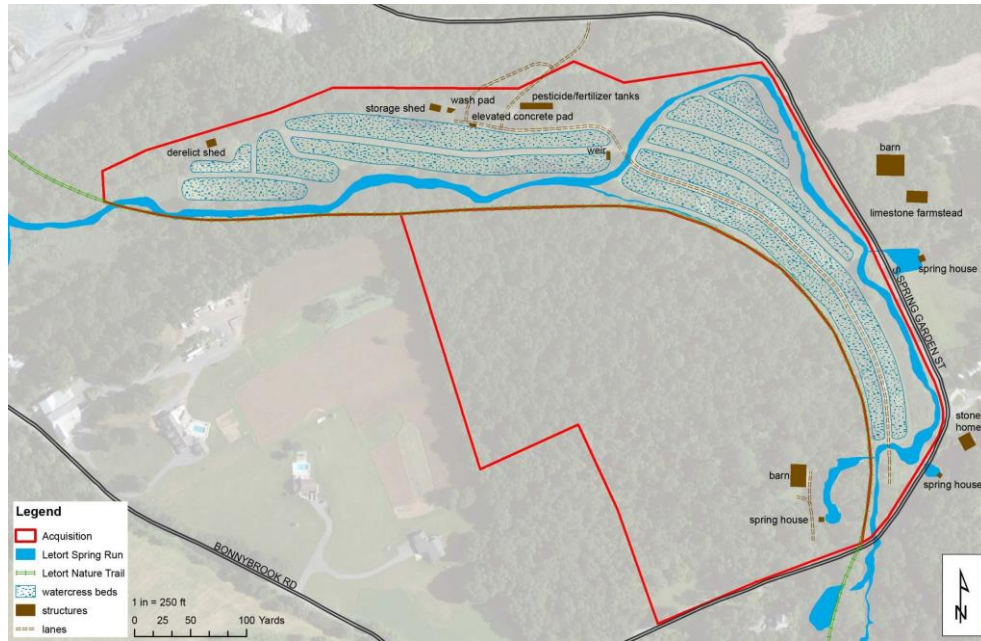
The South Mountain Landscape has a long history of mostly immigrant migrant labor in the agricultural sector. This is especially true in the Fruit Belt region of Adams County and was also raised as a research priority for the Central Pennsylvania Conservancy at the Letort Preserve. The history, family stories, motivations, and accomplishments of the work force, their relationships with their employers, and their interactions with their neighbors, are all very poorly documented. The partnership is seeking proposals to collect and compile an oral history of agricultural labor in the South Mountain Landscape. The proposal should include provisions for:

- the identification of significant research needs,
- the identification of and coordination with local partners and stakeholders with an interest in this project,
- the generation of interview questions and scripts,
- methodologies for identifying, locating, and contacting interview subjects,
- the compiling of audio and/or video files and transcriptions of interviews,
- the preparation of a summary report on the results of the project,
- the public dissemination of the results.

Please note that the proposed project must follow the [ethical guidance of the Oral History Association](#).



Adams County Fruit Belt



CPC Letort Preserve