

# Online Substantial Conformance and Project Review GIS Tool “Beta” Version

Dr. Claire Jantz  
*CLUS Director*

Antonia Price  
*Project Manager*

Jonathon Chester  
*Student Fellow*

Alfonso Yáñez Morillo  
*Research Analyst*



**Center for Land Use  
and Sustainability**

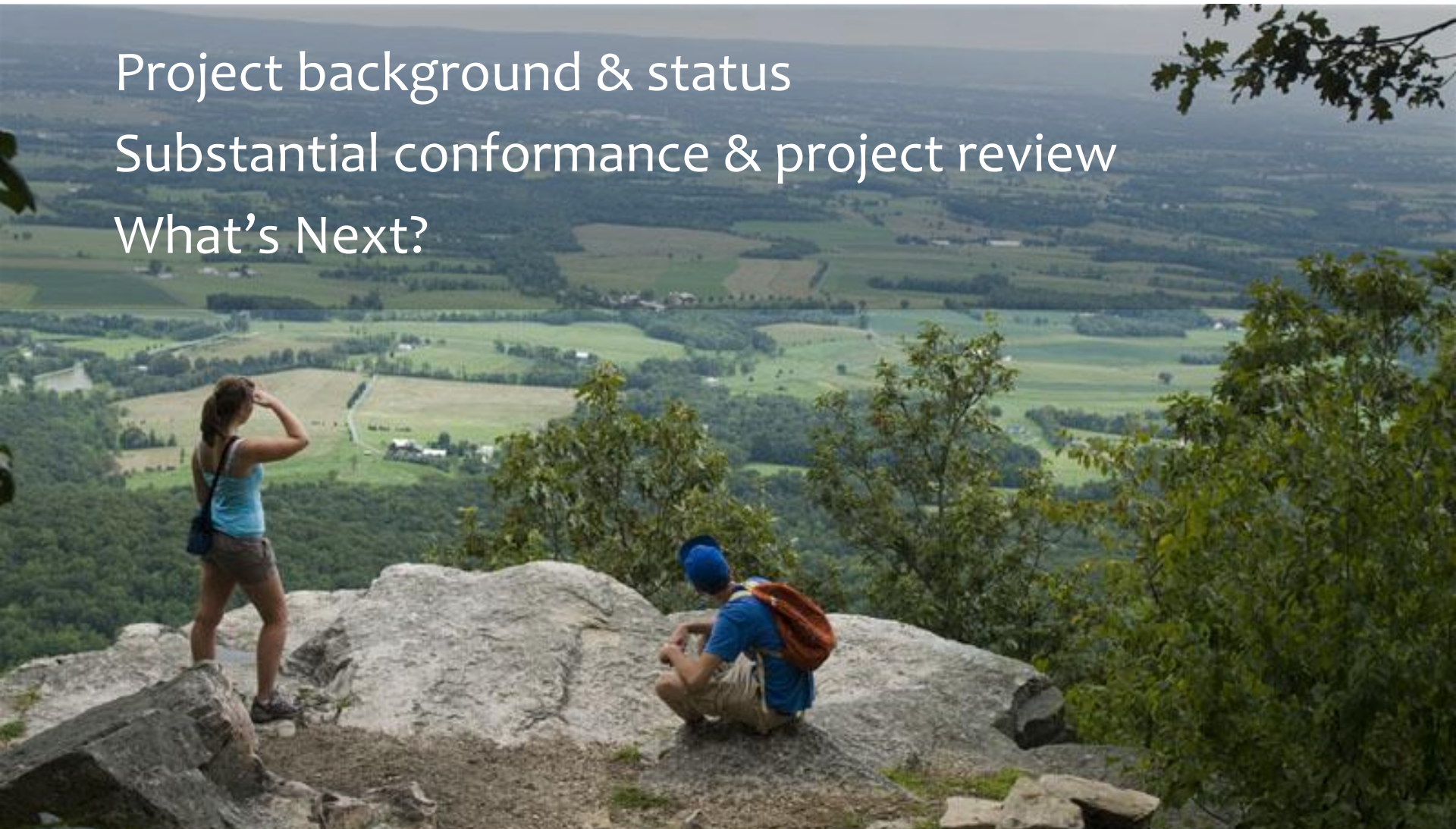
SHIPPENSBURG UNIVERSITY

# Today's Focus

Project background & status

Substantial conformance & project review

What's Next?



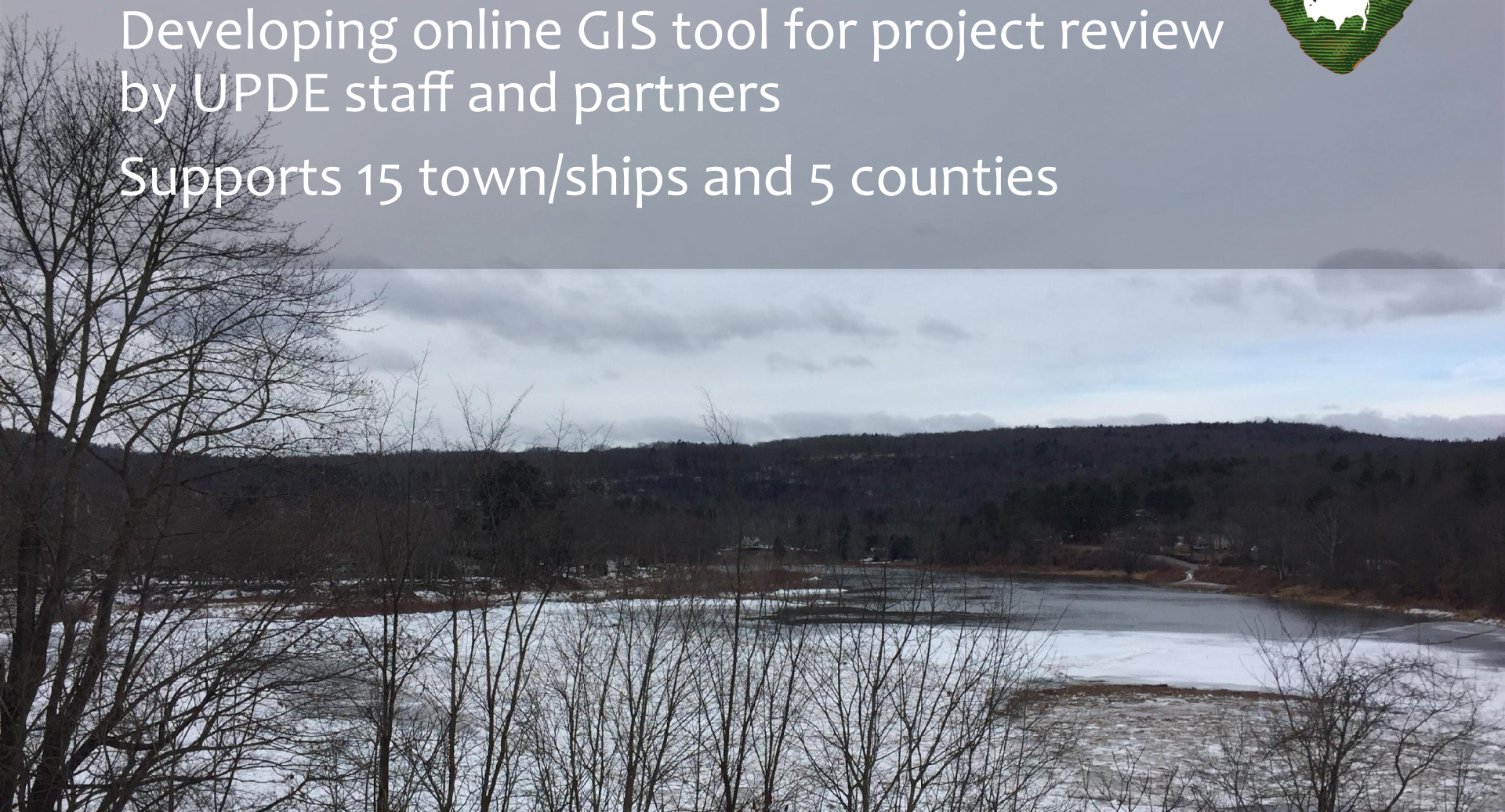


# Upper Delaware Scenic and Recreational River Corridor



Developing online GIS tool for project review  
by UPDE staff and partners

Supports 15 town/ships and 5 counties



# Project background and origins

Developing a Geographic Information System for the Upper Delaware  
Scenic and Recreational River

Shannon L. Thol

GEOG 596B: Capstone Project Report

Advisor: Jim Detwiler

Spring, 2016

The Pennsylvania State University

Master of Geographic Information Systems Program

# Current Project Review Process

- Receive project proposal, or learn about proposed project through various means (e.g. newspaper announcement).
- Find the location of interest on a map of the region to determine if it is in the river corridor, and ascertain its administrative setting (i.e. state, county, and town/township).
- Determine whether it is in a Scenic, Recreational or Hamlet area.
- Inspect zoning maps to identify land use and zoning regulations for that location, and evaluate project compliance with these.
- Determine if the project adheres to Land and Water Use guidelines of the River Management Plan.
- Examine other maps to identify nearby significant riparian assets or ecologically sensitive areas.
- Using Project Review Principles and Objectives, guide progression of the proposed project in a manner that promotes responsible resource stewardship and “substantial conformance” to land and water use guidelines.



**Center for Land Use  
and Sustainability**

SHIPPENSBURG UNIVERSITY



# Current Project Review Process

- Requires mental overlay of location information
- Uses a variety of printed/digital maps
- Different perceptions
- Inefficient
- Introduces subjectivity



*The GIS will be an effective and efficient spatial decision support tool for project review*



**Center for Land Use  
and Sustainability**

SHIPPENSBURG UNIVERSITY

# What is GIS and how can it help?

Upper Delaware Council Inc, Bridge St

Upper Delaware Council Inc  
Association or Organization

Directions

SAVE NEARBY SEND TO YOUR PHONE SHARE

211 Bridge St, Narrowsburg, NY 12764  
upperdelawarecouncil.org  
(845) 252-3022  
Claim this business

Tom's Bait and Tackle

Upper Delaware Council Inc

Narrowsburg Inn Steak & Chop House

St. Francis Xavier Catholic Church

The Heron

The Laundrette

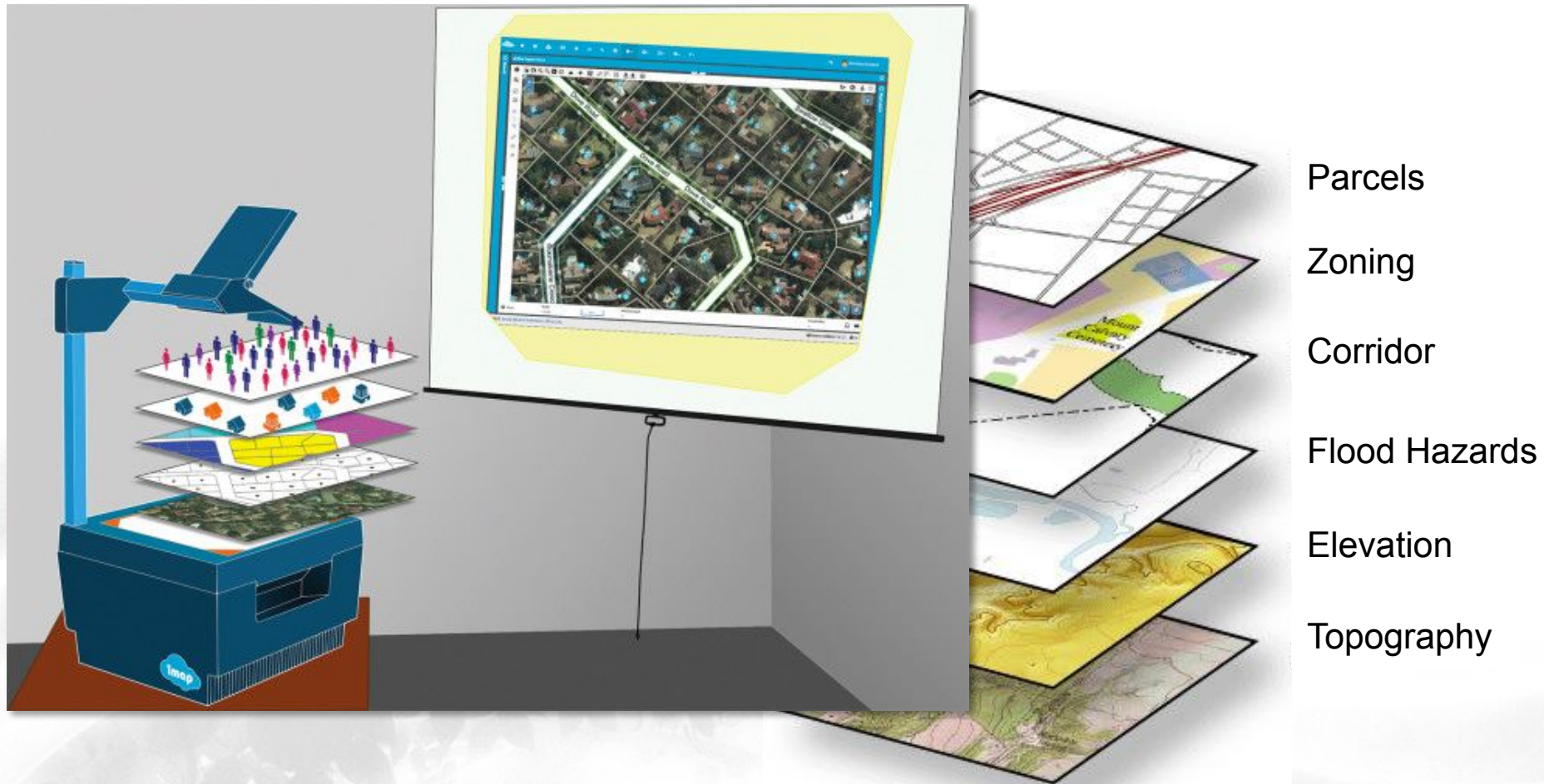
Map data ©2018 Google United States Terms Send feedback 500 ft



**Center for Land Use  
and Sustainability**

SHIPPENSBURG UNIVERSITY

# GIS and land use planning



**Center for Land Use  
and Sustainability**

SHIPPENSBURG UNIVERSITY



# UPDE – CLUS partnership

**Our objective:** To complete and launch an effective and efficient, on-line spatial decision support tool for substantial conformance and project review.

**Our target audience:** The GIS tool will be used by the Upper Delaware Partners – local municipalities, counties, states, UDC, and NPS.



**Center for Land Use  
and Sustainability**  
SHIPPENSBURG UNIVERSITY

# Project objectives

1. Collect, process, and create web services for data identified as essential components of UPDE's project review GIS.
2. Complete development of a webmapping application for UPDE's project review GIS.



**Center for Land Use  
and Sustainability**

SHIPPENSBURG UNIVERSITY

# Substantial conformance & project review

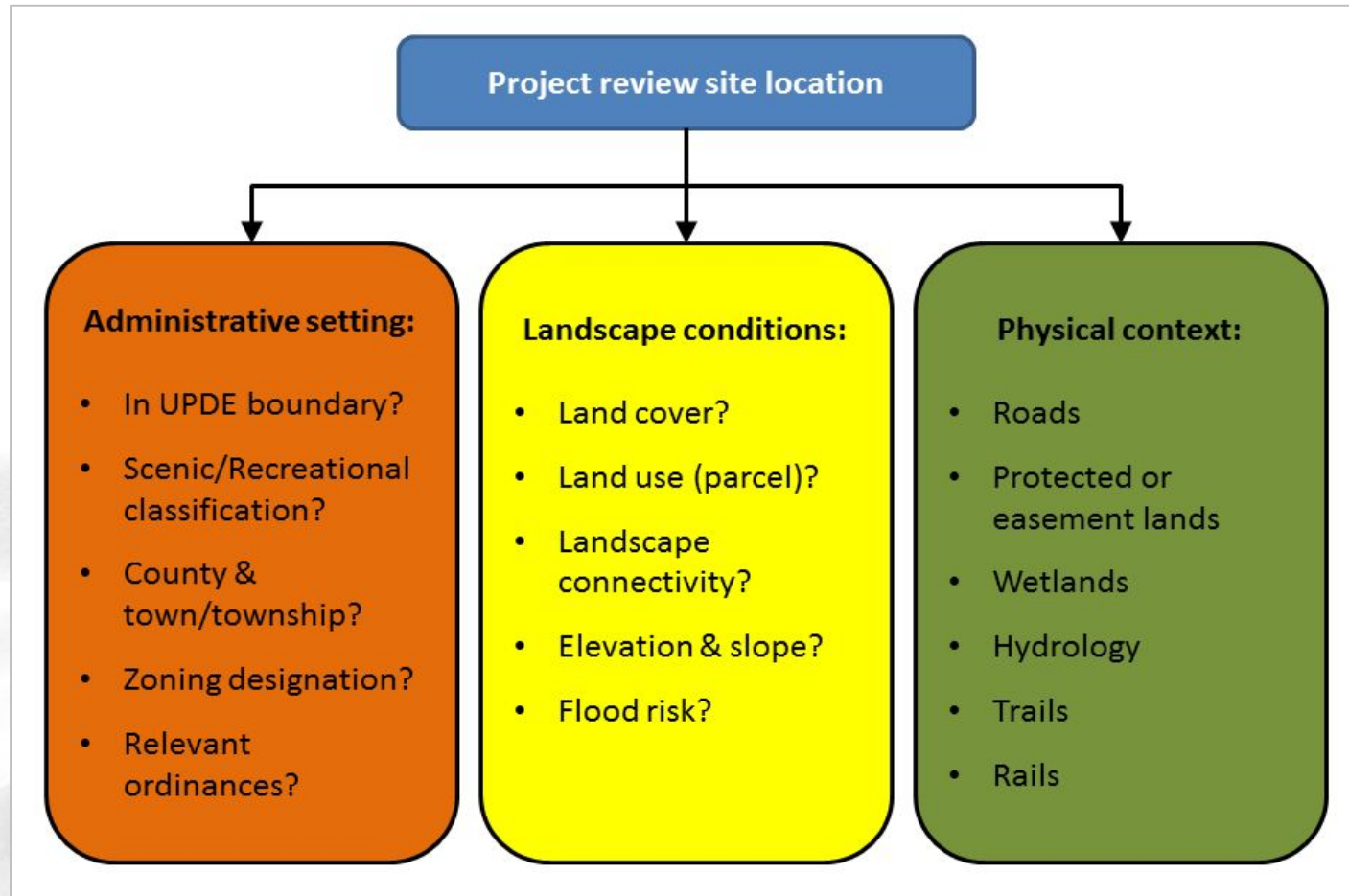


Image source: S.L. Thol 2016



**Center for Land Use  
and Sustainability**

SHIPPENSBURG UNIVERSITY

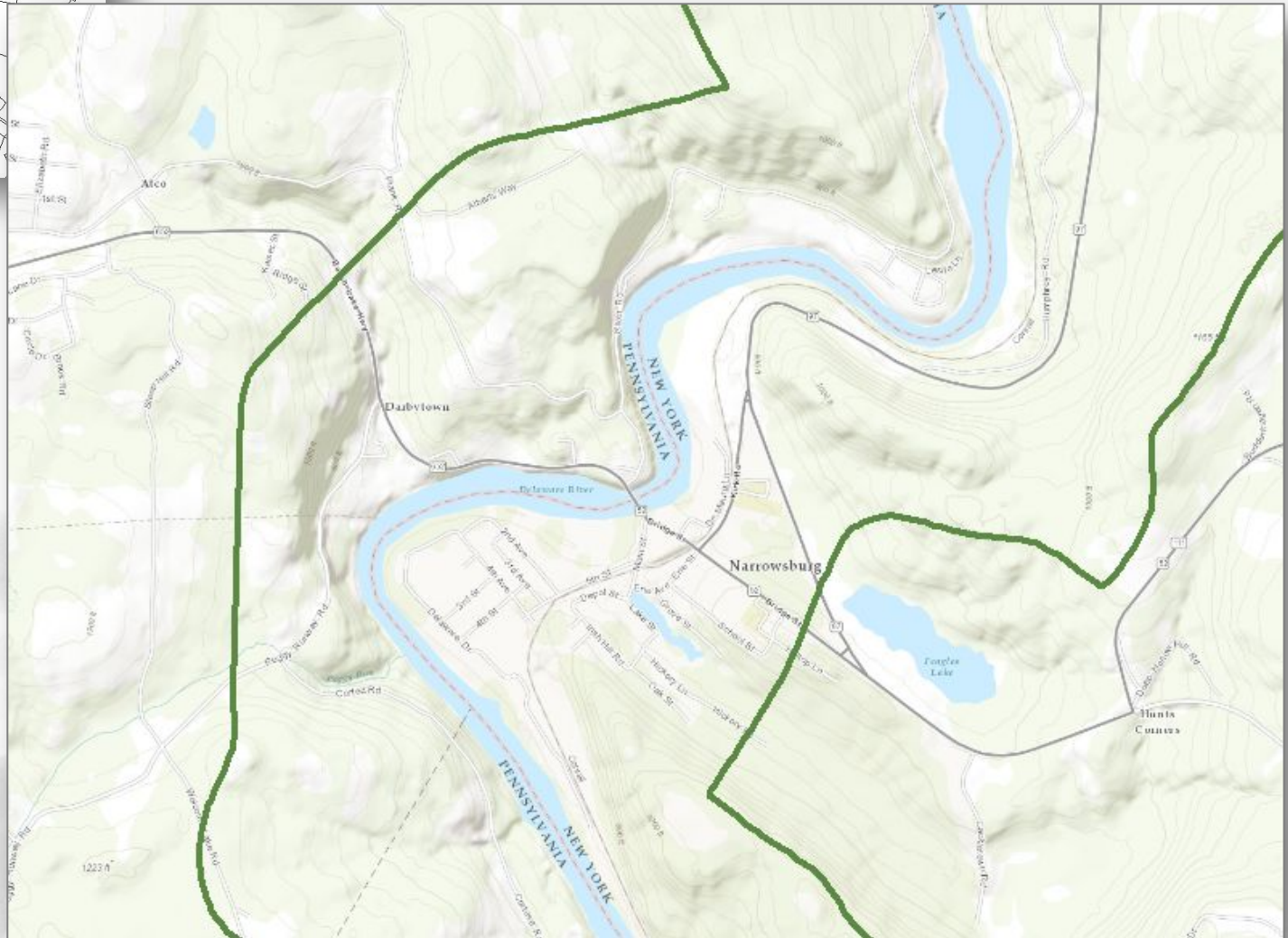




**Center for Land Use  
and Sustainability**

SHIPPENSBURG UNIVERSITY

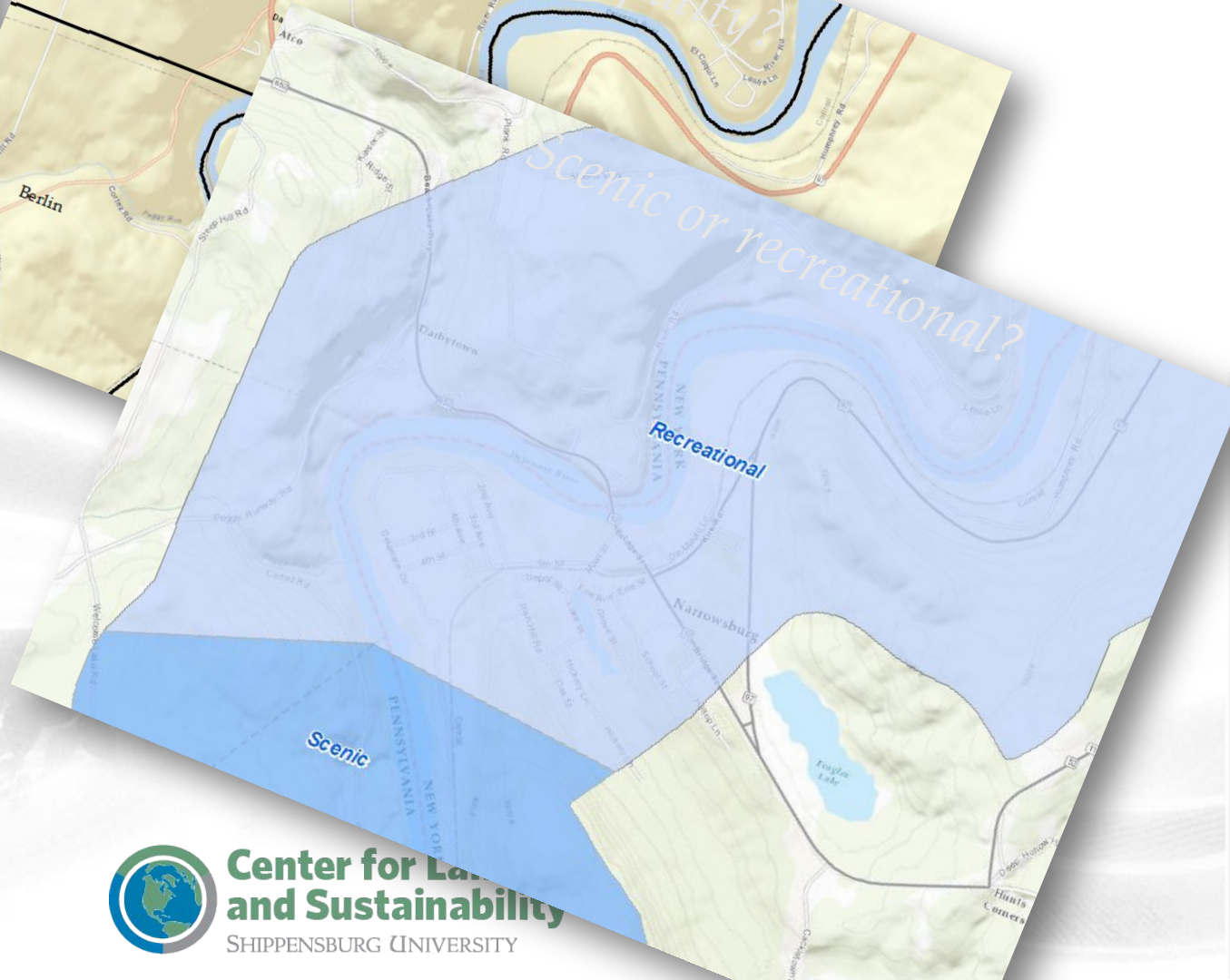
*Is it in the corridor?*



**Center for Land Use  
and Sustainability**

SHIPPENSBURG UNIVERSITY





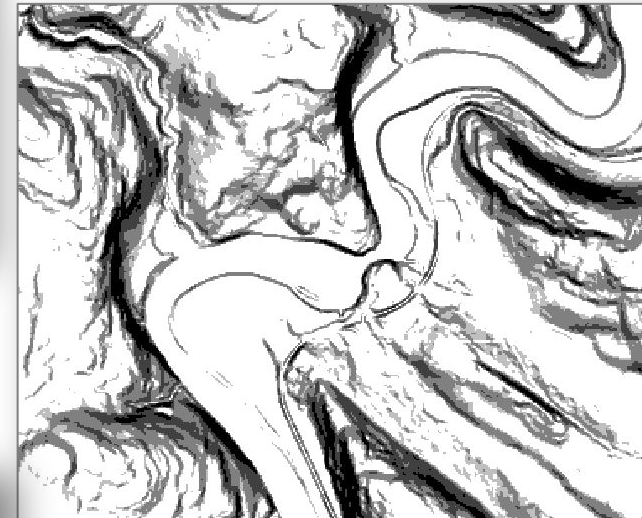
**Center for Land and Sustainability**  
SHIPPENSBURG UNIVERSITY



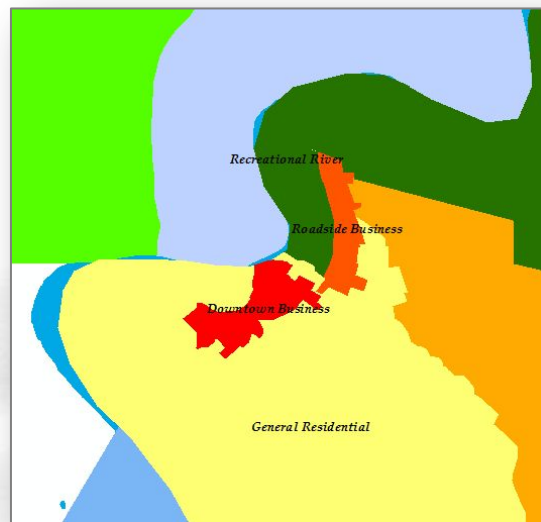
*Are there wetlands?*



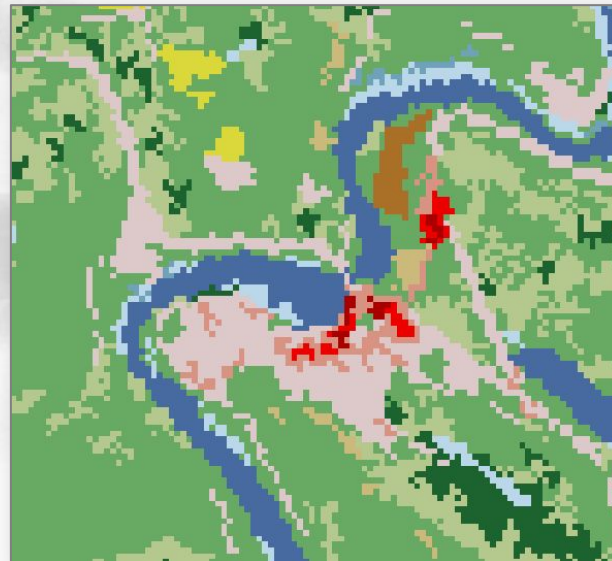
*Are there slopes >15%?*



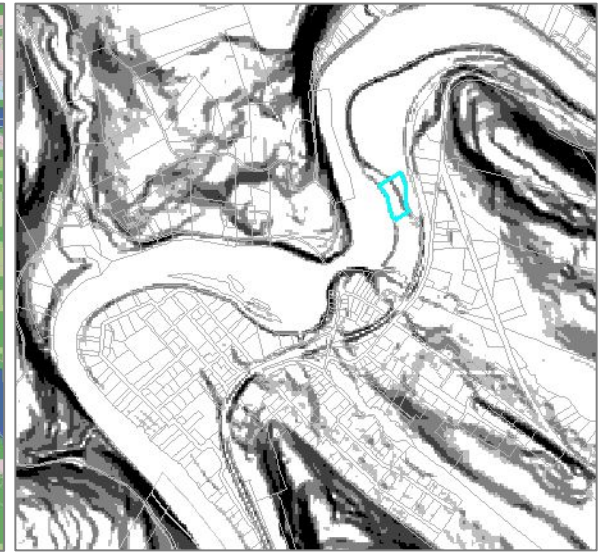
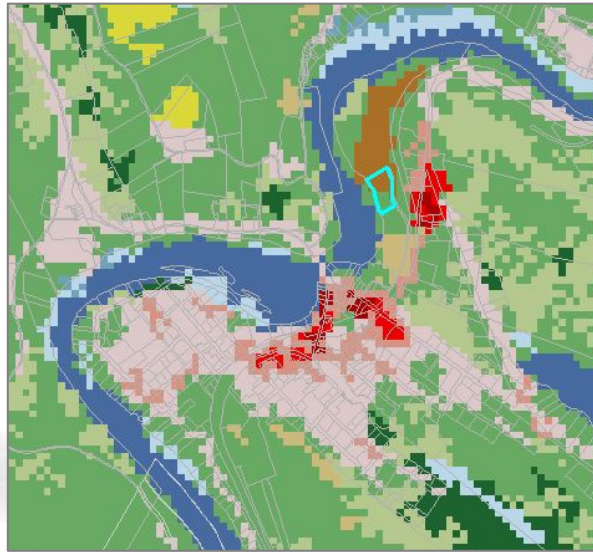
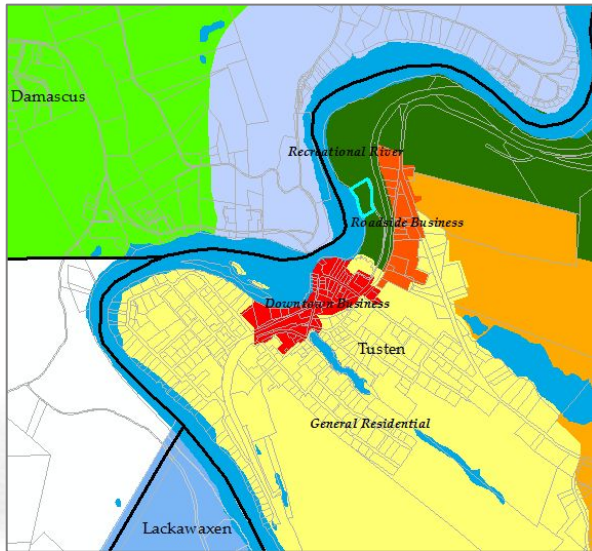
*What is the zoning?*



*What is the land cover?*



The GIS tool will allow for quick, easy, and accurate visual assessment



**Center for Land Use  
and Sustainability**

SHIPPENSBURG UNIVERSITY

# Substantial conformance & project review- Questions

- Is the property in the river corridor?
- If so, what section of the river classification does it fall in- scenic or recreational?
- What township and county does the property fall in?
- Is the property in or near a flood hazard area?
- What is the approximate terrain slope on the property?
- How big is the parcel?



**Center for Land Use  
and Sustainability**

SHIPPENSBURG UNIVERSITY



# Moving forward: Project objectives

1. Collect, process, and create web services for data identified as essential components of UPDE's project review GIS.
2. Complete development of a webmapping application for UPDE's project review GIS.
3. Roll out and technical support for implementation
4. Maintain UPDE's project review GIS system so that it remains up to date and relevant.





# Thank you!





# Contact us!

Claire Jantz, Ph.D.

Project Director & Professor

[cajant@ship.edu](mailto:cajant@ship.edu)

Antonia Price

Project Manager

[afprice@ship.edu](mailto:afprice@ship.edu)

Jonathon Chester  
[www.centerforlanduse.org](http://www.centerforlanduse.org)

Undergraduate Student Fellow



**Center for Land Use  
and Sustainability**

SHIPPENSBURG UNIVERSITY



@ShipCLUS



/ShipCLUS