

Developing a GIS tool to support resource management in the Upper Delaware Scenic & Recreational River corridor

Dr. Claire A. Jantz

Director and Professor

Ms. Antonia Price

Project Coordinator

Mr. Alfonso Yáñez

GIS Analyst

Mr. Jonathon Chester

Student Fellow

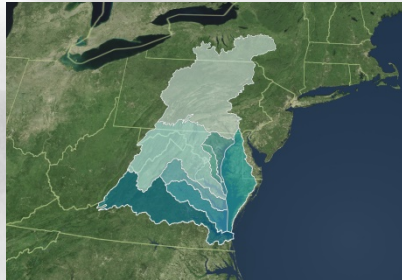


**Center for Land Use
and Sustainability**

SHIPPENSBURG UNIVERSITY

About the CLUS

- We are housed within the Department of Geography-Earth Science at Shippensburg University
- Vision: To become a nationally recognized interdisciplinary center that that leverages the expertise of SU faculty, staff, and students to promote sustainable land use, economic development, and communities at local, regional, and global scales.



Areas of Expertise

- Geographic Information Systems
- Global Navigation Satellite Systems
- Physical and environmental sciences
- Land use planning, economics, and transportation
- Applied history and archaeology
- Sustainable business
- Community sustainability
- Grant writing and project management



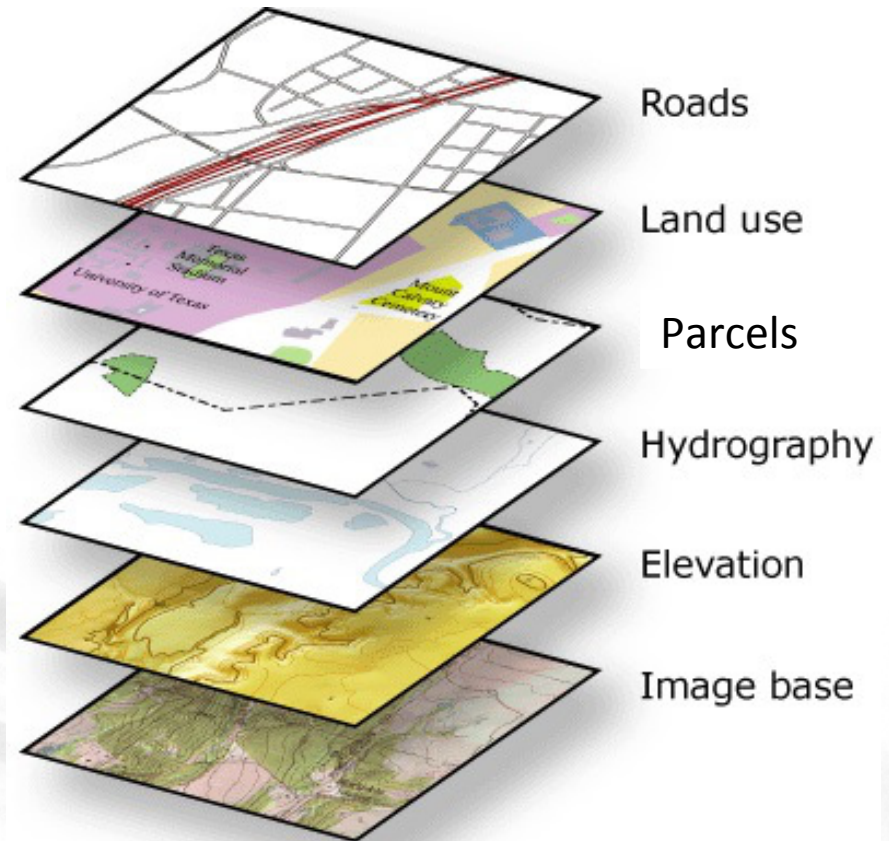
What is GIS?

- A geographic information system (or GIS) is a system designed to capture, store, manipulate, analyze, manage, and present spatial or geographical data.



GIS and land use planning

- Customize the data that *you need*
- Visualize the data, *all in one place*
- Spatial overlays



UPDE – CLUS partnership

- **Our objective:** To complete and launch an effective and efficient, on-line spatial decision support tool for substantial conformance and project review.
- **Our target audience:** The GIS tool will be used by the Upper Delaware Partners – local municipalities, counties, states, UDC, and NPS.



Substantial conformance & project review

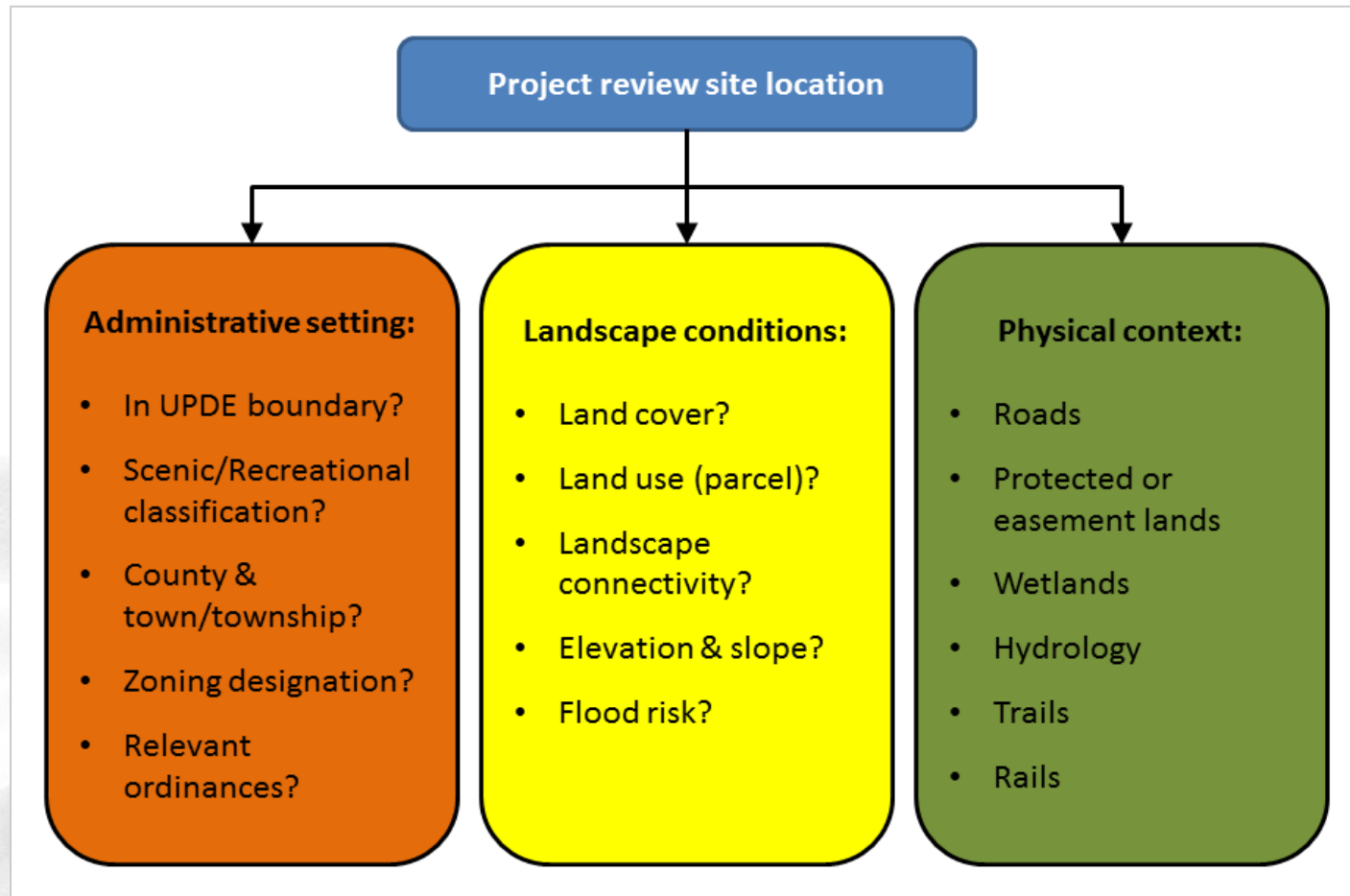
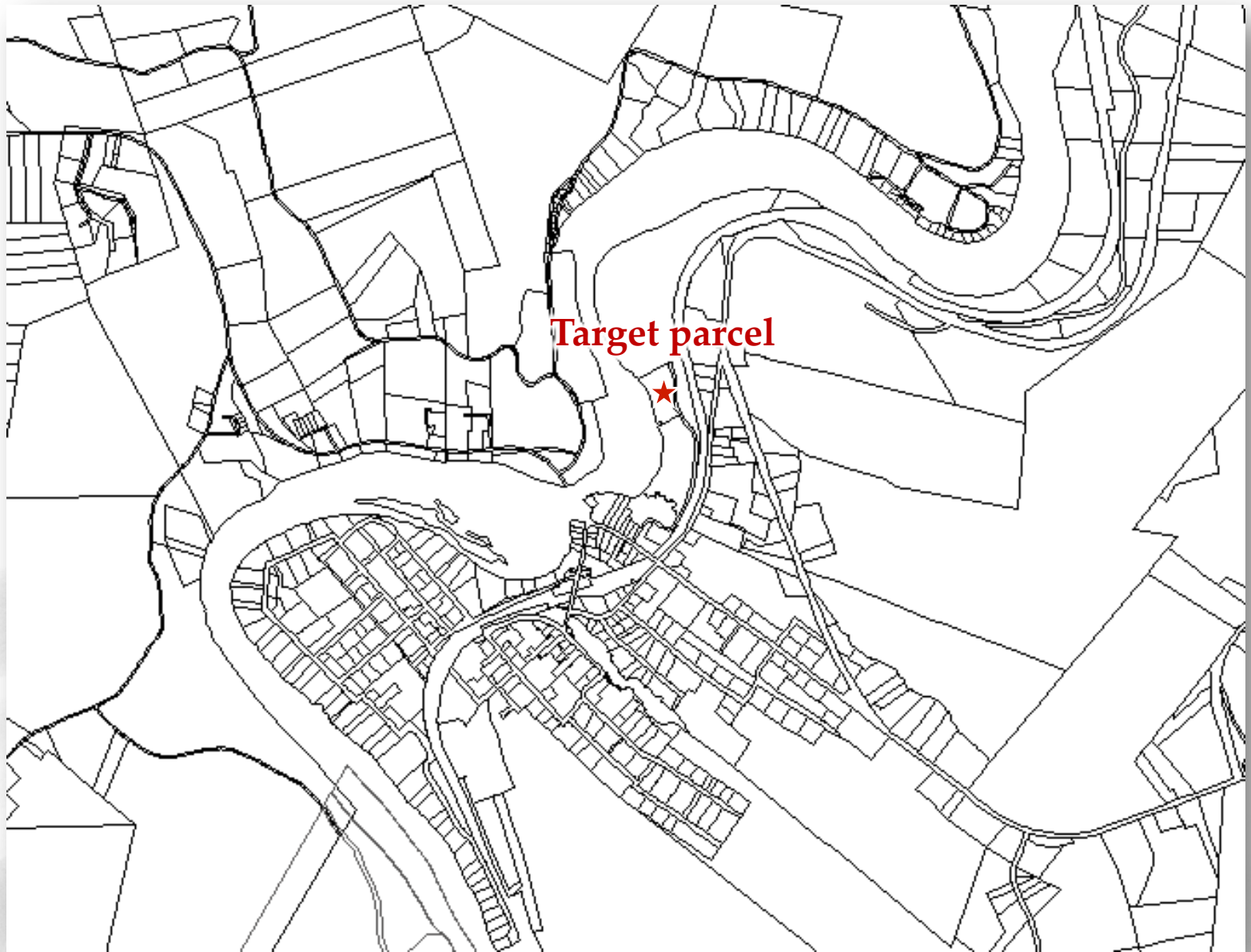
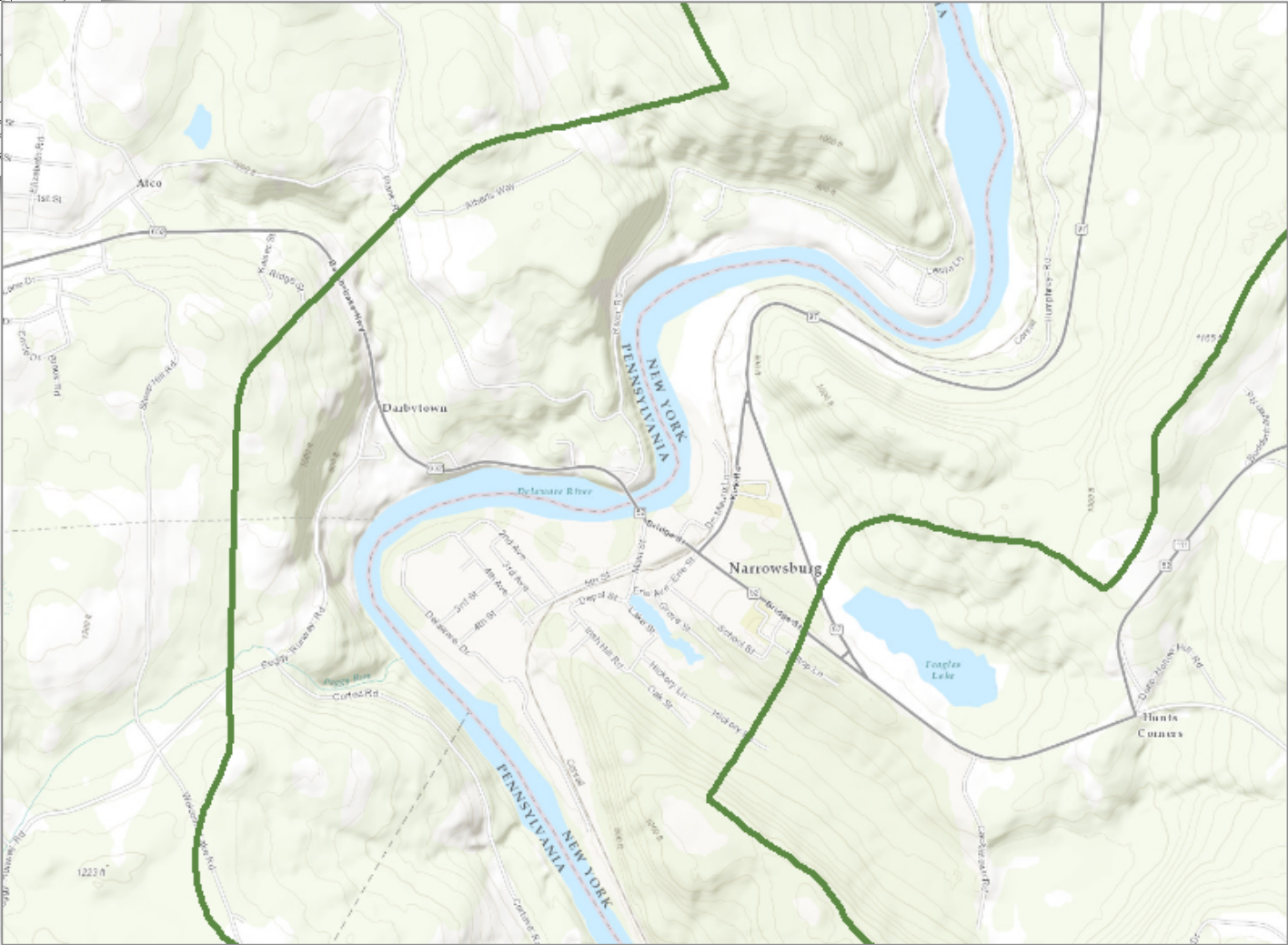
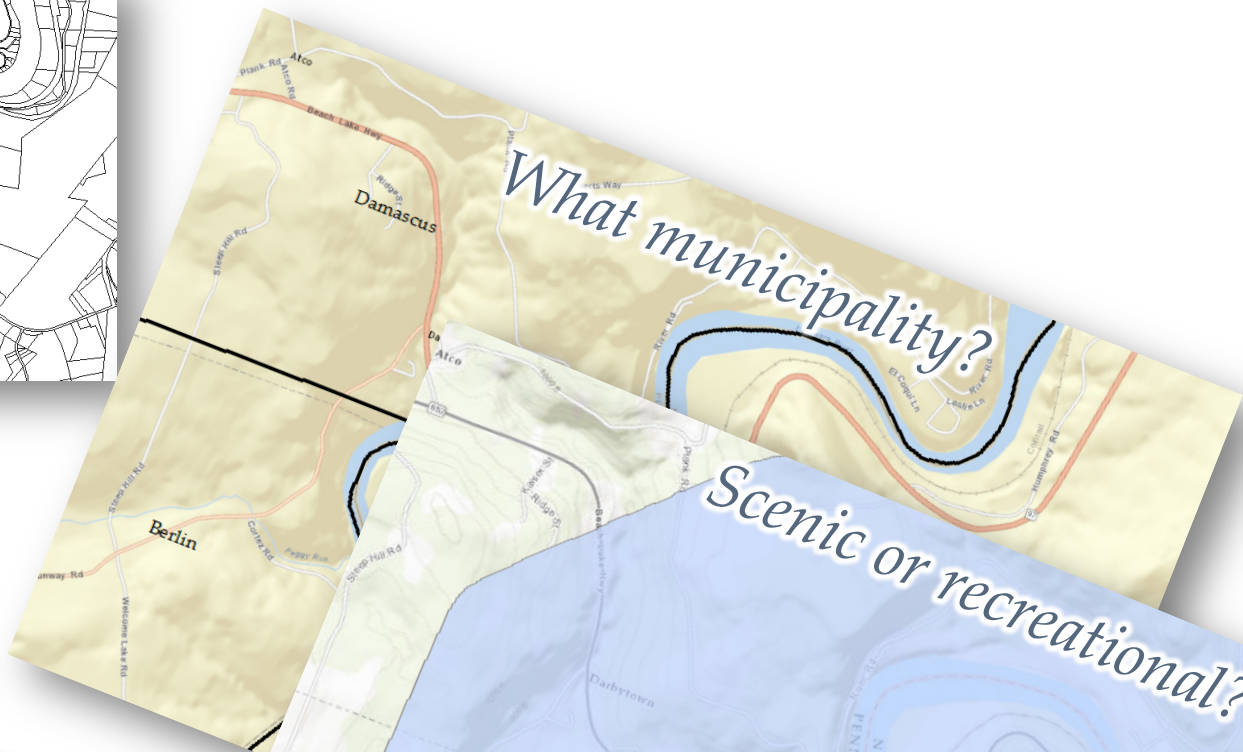


Image source: S.L. Thol 2016



Is it in the corridor?

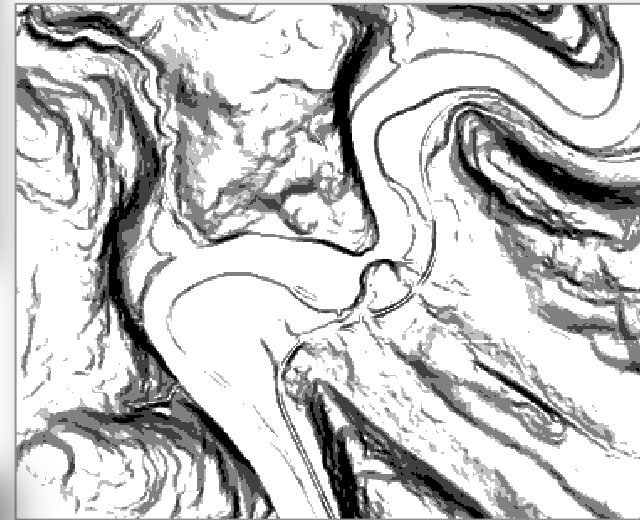




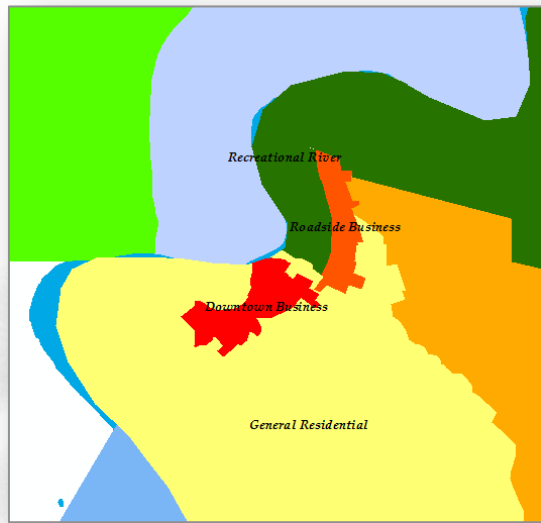
Are there wetlands?



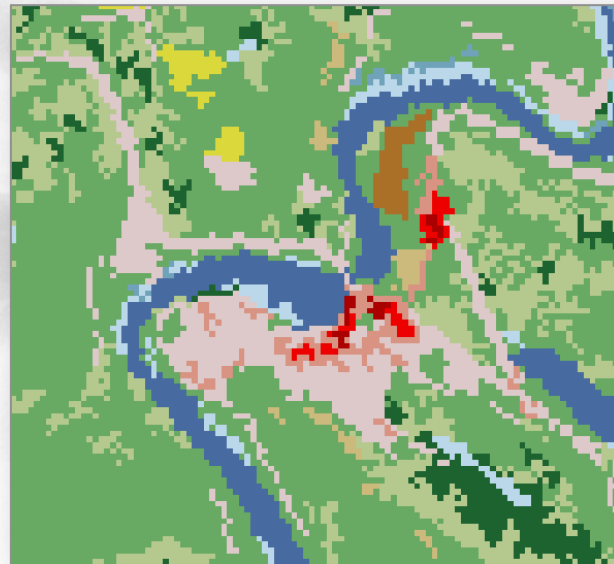
Are there slopes >15%?



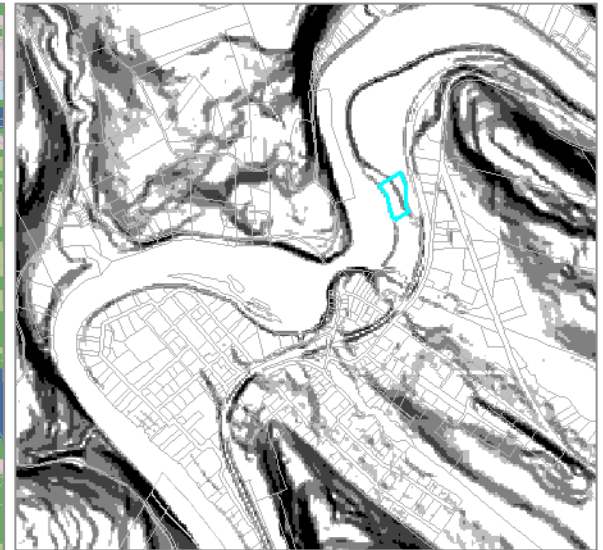
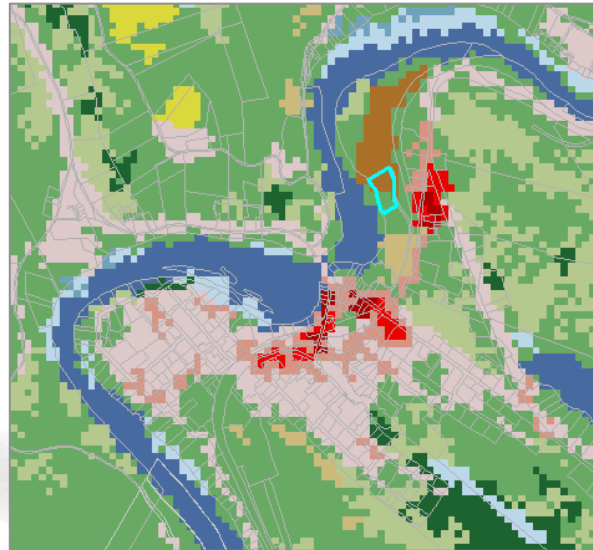
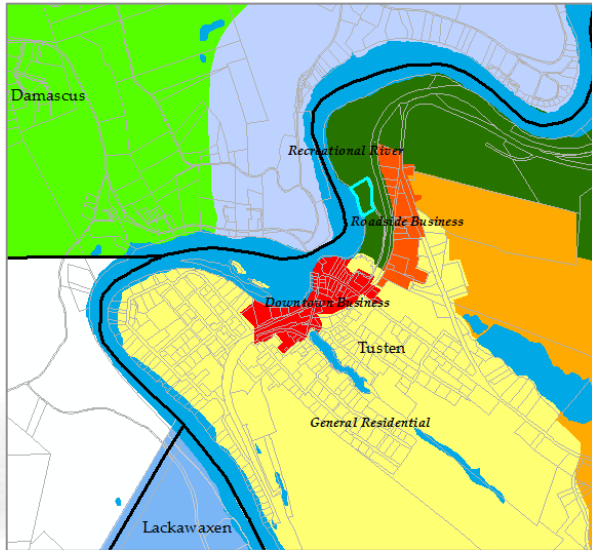
What is the zoning?



What is the land cover?



The GIS tool will allow for quick, easy, and accurate visual assessment



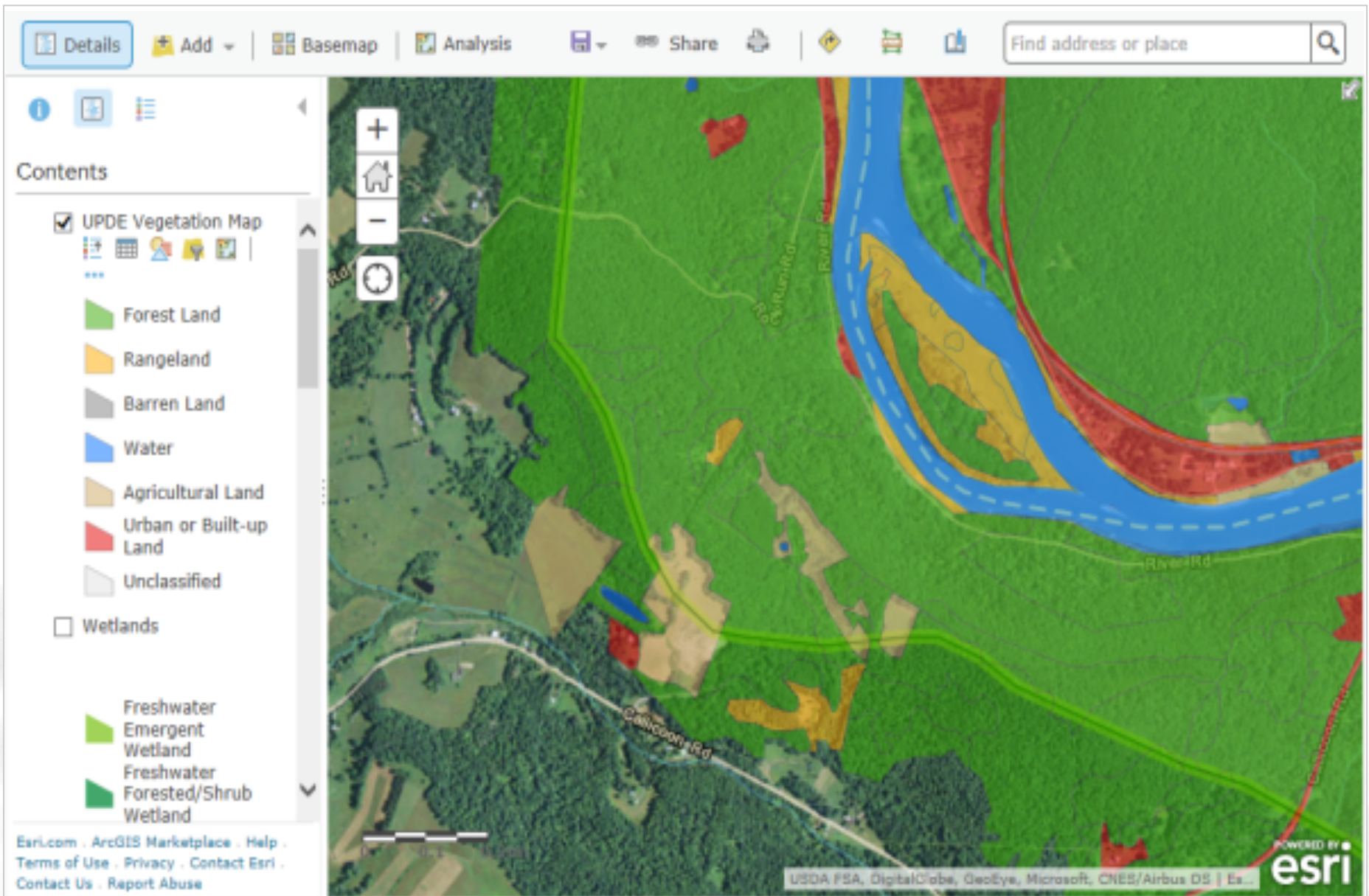


Image source: S.L. Thol 2016

Project background and origins

Developing a Geographic Information System for the Upper Delaware
Scenic and Recreational River

Shannon L. Thol

GEOG 596B: Capstone Project Report

Advisor: Jim Detwiler

Spring, 2016

The Pennsylvania State University

Master of Geographic Information Systems Program

Moving forward: Project objectives

1. Collect, process, and create web services for data identified as essential components of UPDE's project review GIS.



Information of interest	Required data	Data source
Street address? (for precisely locating sites)	911 point shapefiles	Upper Delaware counties and towns/townships
In UPDE boundary?	UPDE boundary shapefile	National Park Service
Scenic/recreational classification?	Scenic and recreational segments shapefile	National Park Service
County & town/township?	County & county subdivisions shapefiles	U.S. Census Bureau
Zoning designation?	Zoning maps/shapefiles	Upper Delaware counties and towns/townships
Relevant ordinances?	Zoning codes and ordinances	Upper Delaware counties and towns/townships
Vegetation land cover?	Vegetation map shapefile	National Park Service
Other land cover?	Discrete land cover rasters	USGS National Land Cover Dataset
Land use (parcel)?	Tax parcel shapefiles	Upper Delaware counties and townships
Elevation and slope?	Slope raster derived from DEM	USGS National Elevation Dataset
Flood risk?	Flood insurance rate maps and shapefiles	FEMA
Proximate roads and rails?	TIGER/Line® road and rail shapefiles	U.S. Census Bureau
Proximate public lands?	Protected Areas Data shapefile	USGS National Gap Analysis Program
Proximate wetlands?	National Wetland Inventory shapefile	US Fish and Wildlife Service
Proximate hydrology?	National Hydrography Dataset shapefiles	USGS
Landscape context?	Satellite images/aerial photos/topographic base maps	Esri

Moving forward: Project objectives

1. Collect, process, and create web services for data identified as essential components of UPDE's project review GIS.
2. Complete development of a webmapping application for UPDE's project review GIS.
3. Roll out and technical support for implementation
4. Maintain UPDE's project review GIS system so that it remains up to date and relevant.

Project contacts

At CLUS:

Ms. Antonia Price

Project Coordinator
afprice@ship.edu

717-477-1519

Dr. Claire Jantz

Project Director
cajant@ship.edu

717-477-1399

At NPS:

Ms. Carla Hahn

Park Ranger, Management
Upper Delaware Scenic and
Recreational River

carla_hahn@nps.gov
570-729-8251 X2226

<http://centerforlanduse.org/projects/upde/>



January 5, 2017 | Upper Delaware Council | Narrowsburg, NY

Thank you!



Center for Land Use
and Sustainability
SHIPPENSBURG UNIVERSITY